

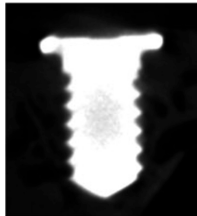
Ti + PBS

Ti + Lip

Ti + LipClod

Control

Buccal-palatal



mesial-distal



Artwork Formatting Report

Job code: ABCD_2

Total number of figures: 1

Summary of changes made to meet journal requirements

Target journal name: Journal of Periodontal Research

Specifications of the final figures

Figure number	Figure type	Width (mm)	Height (mm)	Resolution (dpi)	File format	Font type	Color mode
Figure 1	Combination	113	63	600	TIFF/EPS/PDF	Arial	Grayscale

If you have any questions about any of the changes or notes, please let us know. For a glossary of terms used in this report, please see the following page.

Glossary of terms used in the report

RGB (Red, green, blue): A color mode, usually recommended for images intended for online publication

CMYK (Cyan, Magenta, Yellow, black): A color mode, usually recommended for images intended for print publication

TIFF (Tagged Image File Format): A file format, usually recommended for color and grayscale images, particularly photographs

EPS (Encapsulated PostScript): A file format, usually recommended for images, particularly for vector images such as graphs.

Line art: Images with straight lines and text, such as graphs, charts, and simple diagrams

Halftone: Photographic images, drawings, paintings, etc. with fine shading

Combination art: Images that are a combination of halftone and line art or halftone and text.